



How to select a stud type terminal block

Each data sheet begins with the fundamental information about each block: electrical specification; mechanical specification; materials and finishes; pre-set torque spanners. The data sheets present the drawings, normal dimensions and the tables from which to select the part numbers required.

The final few pages of the data sheet detail the accessories available for that series of terminal block. To determine which accessories you may need to accompany the terminal block, see below.

How to select the part number

Basic Part No	Terminal Blocks						Single Row
	Colour Suffix						Number of Terminals
	Black	Blue	Yellow	Red	Green	White	
BA threads 72141- H/WB/1110/S/ UN threads 72441 H/WB/UN/1110/S/	621-0	641-0	661-0	681-0	701-0	721-0	1
	1/B	1/BL	1/Y	1/R	1/G	1/W	
	622-0	642-0	662-0	682-0	702-0	722-0	2
	2/B	2/BL	2/Y	2/R	2/G	2/W	
	623-0	643-0	663-0	683-0	703-0	723-0	3
	3/B	3/BL	3/Y	3/R	3/G	3/W	
	624-0	644-0	664-0	684-0	704-0	724-0	4
	4/B	4/BL	4/Y	4/R	4/G	4/W	
	625-0	645-0	665-0	685-0	705-0	725-0	5
	5/B	5/BL	5/Y	5/R	5/G	5/W	
	626-0	646-0	666-0	686-0	706-0	726-0	6
	6/B	6/BL	6/Y	6/R	6/G	6/W	
627-0	647-0	667-0	687-0	707-0	727-0	7	
7/B	7/BL	7/Y	7/R	7/G	7/W		
628-0	648-0	668-0	688-0	708-0	728-0	8	
8/B	8/BL	8/Y	8/R	8/G	8/W		
629-0	649-0	669-0	689-0	709-0	729-0	9	
9/B	9/BL	9/Y	9/R	9/G	9/W		
630-0	650-0	670-0	690-0	710-0	730-0	10	
10/B	10/BL	10/Y	10/R	10/G	10/W		
631-0	651-0	671-0	691-0	711-0	731-0	11	
11/B	11/BL	11/Y	11/R	11/G	11/W		
632-0	652-0	672-0	692-0	712-0	732-0	12	
12/B	12/BL	12/Y	12/R	12/G	12/W		

Question	1. What thread do I need?	2. What colour do I need?	3. How many terminals?
Answer	BA	White	2
Part Number	72141-	722-0	

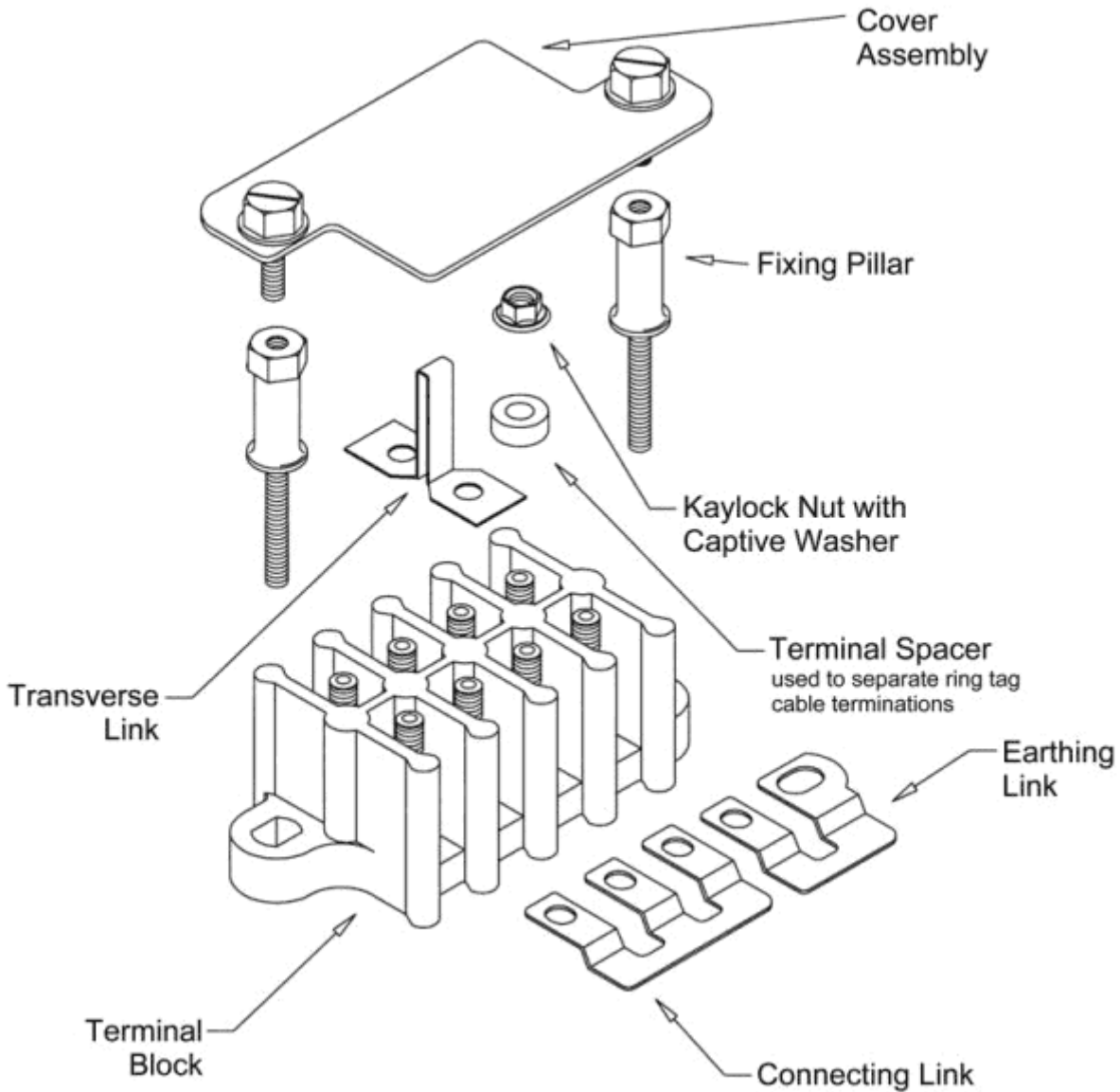
Complete Ultra Part number = 72141-722-0

(Ward Brooke number = H/WB/1110/S/2/W)

What else do I need?

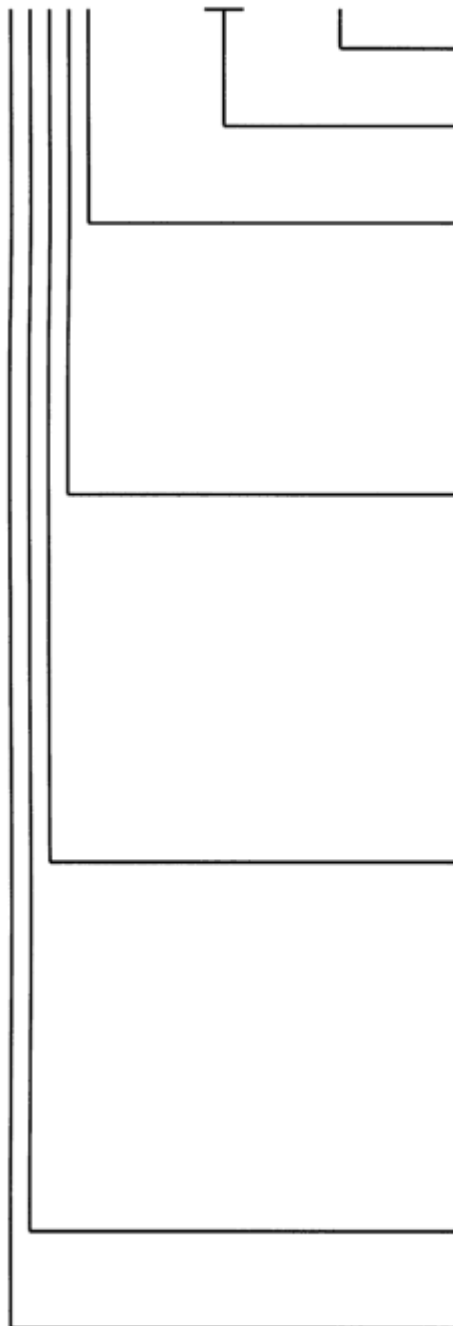
The accessories that are available with each terminal block and cover combination are listed within the section of the series you will be referring to. The diagram below illustrates the parts that you may require and how they are incorporated together.

An all inclusive part number for each series of terminal block is referenced in the data for each block - this uses a suffix of either AV2 or AV3.



Identification of stud type terminal block part number

XXXXX - XXX - 0



CONSTANT

VARIABLE SECTOR

See drawing for number of ways and colour

STYLE

1. Single row, single sided
2. Single row, double sided, thread one end only
3. Single row, double sided, thread both ends
4. Double row, single sided
5. Double row, double sided, thread one end only
6. Double row, double sided, threaded both ends

MATERIAL

1. Nylon, low temperature
2. Nylon, high temperature
3. Polyester dough
4. Polyethersulphone (PES)
5. Epoxy resin
6. Alkyd
7. Not allocated
8. Polyetheretherketone (PEEK)
9. Not allocated

THREAD FORM

1. Imperial BA
2. Imperial BSF
3. Imperial BSW
4. Unified 4 UNF UNC UNJC
5. Unified 6 UNF UNC UNJC
6. Unified 8 UNF UNC UNJC
7. Unified other than above
8. Unified different thread sizes (polarised)
9. Metric

TYPE

2. Stud Type terminal blocks
(constant with terminal blocks)

PRODUCT TYPE

7. Electrical functional components
(constant with terminal blocks)